

HOW DOES YOUR PAYCHECK GROW?

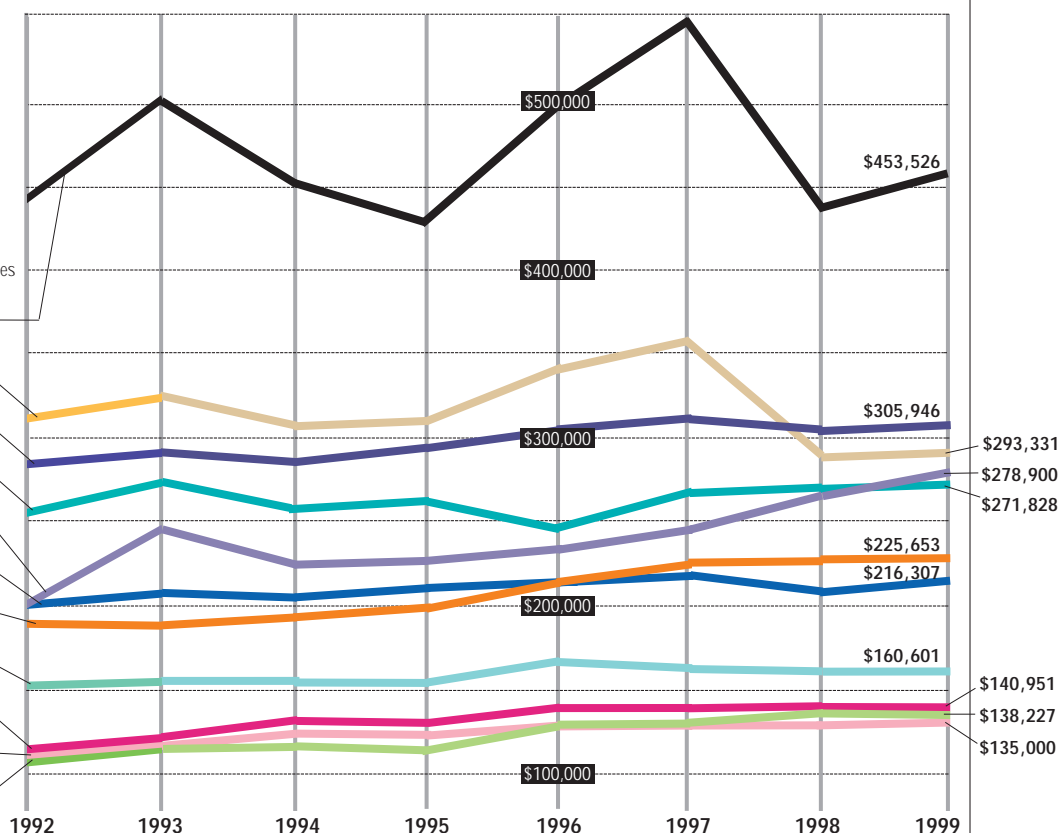
PHYSICIAN COMPENSATION

An eight-year comparison of median income

SPECIALTY

Individual Responses / Group Responses

■ SURGERY- CARDIOVASCULAR	276 / 68
■ RADIOLOGY- DIAGNOSTIC*	562 / 66
■ RADIOLOGY- INVASIVE	448 / 131
■ RADIOLOGY- NONINVASIVE	465 / 153
■ SURGERY- ORTHOPEDIC	1,083 / 264
■ OB/GYN	1,432 / 272
■ SURGERY- GENERAL	902 / 229
■ NEUROLOGY	350 / 118
■ INTERNAL MEDICINE*	3,662 / 406
■ PEDIATRICS	1,909 / 291
■ FAMILY PRACTICE*	2,933 / 389



Physicians had slightly fatter paychecks in 1998, according to the MGMA Compensation Survey, with specialists feeling their renewed demand.

LAST YEAR BOTH SPECIALISTS AND primary-care physicians experienced overall gains in median compensation, but the specialists' gain was slightly higher than that of primary-care physicians. So reports the Medical Group Management Association (MGMA) in the *Physician Compensation and Production Survey*:

1999 Report Based on 1998 Data.

Pay was up by 2.54 percent overall for primary-care physicians (family practice, internal medicine, and pediatrics), and up by 5.22 percent for all specialty physicians. Dermatologists experienced the largest gain of any specialty with an increase of 9.23 percent in median compensation. Emergency physicians experienced a slight decline of .64 percent.

At the same time, median gross charges increased by more than the physicians' incomes. Gross charges for primary-care physicians were up by 4.67 percent, and up by 6.51 percent for specialists.

The larger pay increases for specialists reflect the renewed demand for these physicians.

The survey is a tabulation of responses from 1,609 medical group practices representing 30,838 physicians and midlevel providers. ■

Additional tables from this report, showing physician compensation for all specialties by geographic section, are available on UO's Web site: www.uoworks.com

* Since data have been collected for this table, several specialties have been further separated into subgroups. These include: diagnostic radiology (invasive/non-invasive), family practice (with OB/without OB), and internal medicine (general/hospitalist). The compensation amounts reported here are for the physicians in these specialties practicing without additional procedures or specialization.